

CONTEXT SETTING



Country: **Bhutan**
Resource Setting: **Low**



PREMISE OF WHEELCHAIR-SPECIFIC TOPIC

Instructor: Karma Phuentsho, Chief Physiotherapist
Contact: kphuentsho@jdwnrh.gov.bt
Program: 3-year Diploma in Physiotherapy
Language: English
Approach: Lectures, Labs, & Workshops.
Type: Mandatory
Credit: 3 course credits - 40 total hours of wheelchair education
Schedule: 4-hour class per week for 10 weeks

Historical Context: Wheelchair education not provided

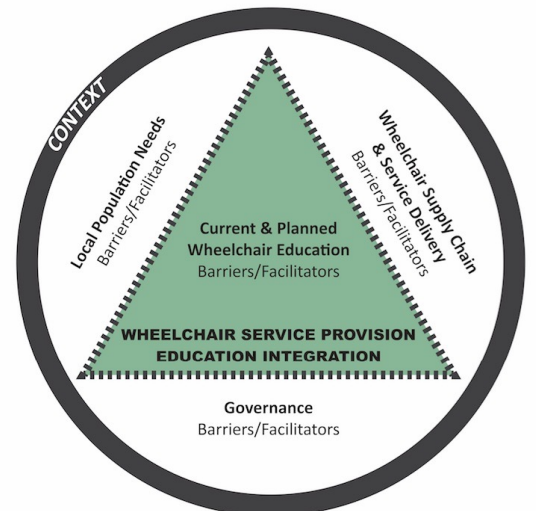
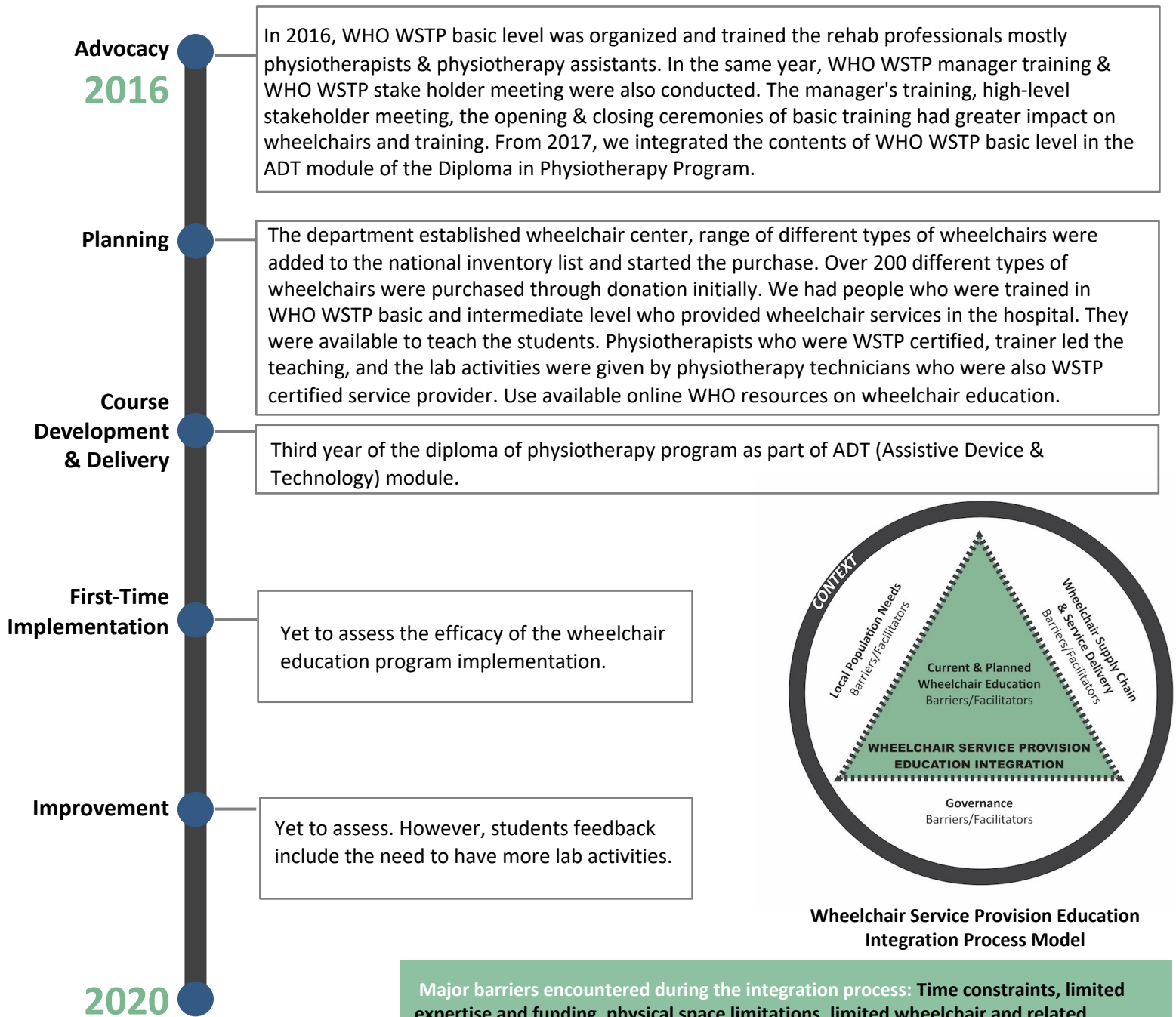
Learning Objectives: To be able to provide basic wheelchair screening & service.

WHEELCHAIR SERVICE PROVISION TOPICS based on WHO 8-Step Model

- | | | | |
|-------------------------------|---------------------------|--|--------------------------------|
| Step 1 Appointment & Referral | Step 3 Prescription | Step 5 Product (Wheelchar) Preparation | Step 7 User Training |
| Step 2 Assessment | Step 4 Funding & Ordering | Step 6 Fitting | Step 8 Maintenance & Follow-Up |

INTEGRATION PROCESS

At every state of wheelchair service provision education integration were elements from (1) local population needs, (2) governance, (3) wheelchair supply chain & service delivery and current & planned wheelchair education. The timeline below includes resources found in ISWP SMART as denoted by *.



Wheelchair Service Provision Education Integration Process Model